

**TYPE OF SPOOLS**

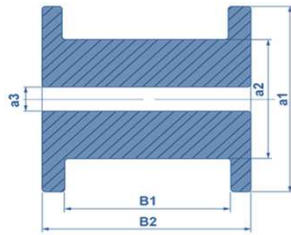


Figure 1

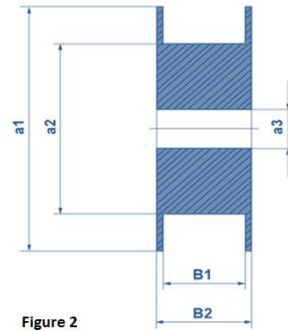


Figure 2

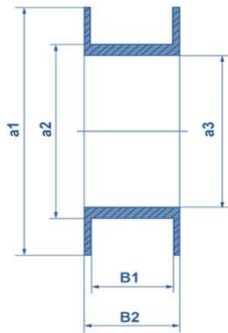


Figure 3

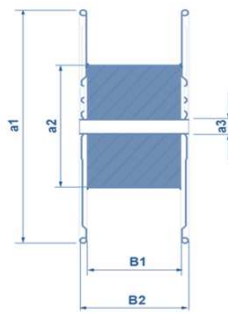


Figure 4

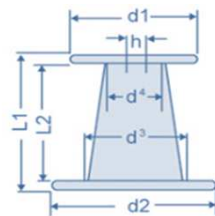


Figure 5

TYPE OF SPOOLS	FIGURE	A1 / D1	A2 / D2	A3 / D4	B1 / L1	B2 / L2	FILLING WEIGHT
		(MM)	(MM)	(MM)	(MM)	(MM)	
K50	1	40	25	11	37,5	50	approx. 0,5 kg max.
K80	1	80	50	16	64	80	approx. 1 kg max.
K100	1	100	63	16	80	100	approx. 2 kg max.
K125	1	125	80	16	100	125	approx. 3 kg max.
K160	1	160	100	22	128	160	approx. 6 kg max.
K200	1	200	125	22	160	200	approx. 10 kg max.
K250	1	250	160	22	160	200	approx. 18 kg max.
K355	1	355	224	36	160	200	approx. 30 kg max.
wooden spools 480	1	480	250	36	250	290	approx. 65 kg max.
DWF 500	1	500	315	36	180	250	approx. 50 kg max.
SD 100	2	100	38	16,5	38,5	45	approx. 1,5 kg max.
SD 200	2	200	105	50,5	45	55	approx. 5 kg max.
SD 300 K	2	300	212	51,5	91	103	approx. 10 kg max.
SH 370 K	3	370	311	305	70	80	approx. 12 kg max.
SH 390 K	3	390	310	305	79	89	approx. 15 kg max.
SH 460 K	3	460	319	305	91	105	approx. 40 kg max.
BS 300 (metal spools)	4	300	188	51,5		100	approx. 15 kg max.
BS 560 (metal spools)	4	560	300	40	200	230	approx. 150 kg max.
BS 760 (metal spools)	4	760	400	40	270	320	approx. 300 kg max.
TYPE OF SPOOLS	FIGURE	d1/d2 (mm)	d3/d4 (mm)	h	L1 (mm)	L2 (mm)	FILLING WEIGHT
PT 90	5	300/315	180/200	100	550	425	approx. 90 kg max.